

# IPR PAR2 DATA ACQUISITION SYSTEM

## Software Included:

PAR Force Monitoring & Data Acquisition Software  
 Windows 2000/XP Professional Operating System  
 Borland's Interbase (A secure SQL Database for Record Storage and Data Logging)  
 Intellution Human Machine Interface

## Hardware Included:

Computer  
 Digital Signal Processing  
 Portable Cart  
 3 Analog Devices 3B Strain Gage Input Modules and back-plane  
 2 Proximity Sensors and  
 Power Supply  
 One (1) set of Cabling Between Cabinet and Press  
 Press Junction Box for Strain Gauging and Balancing  
 Stainless Steel Cabinet

## About Us

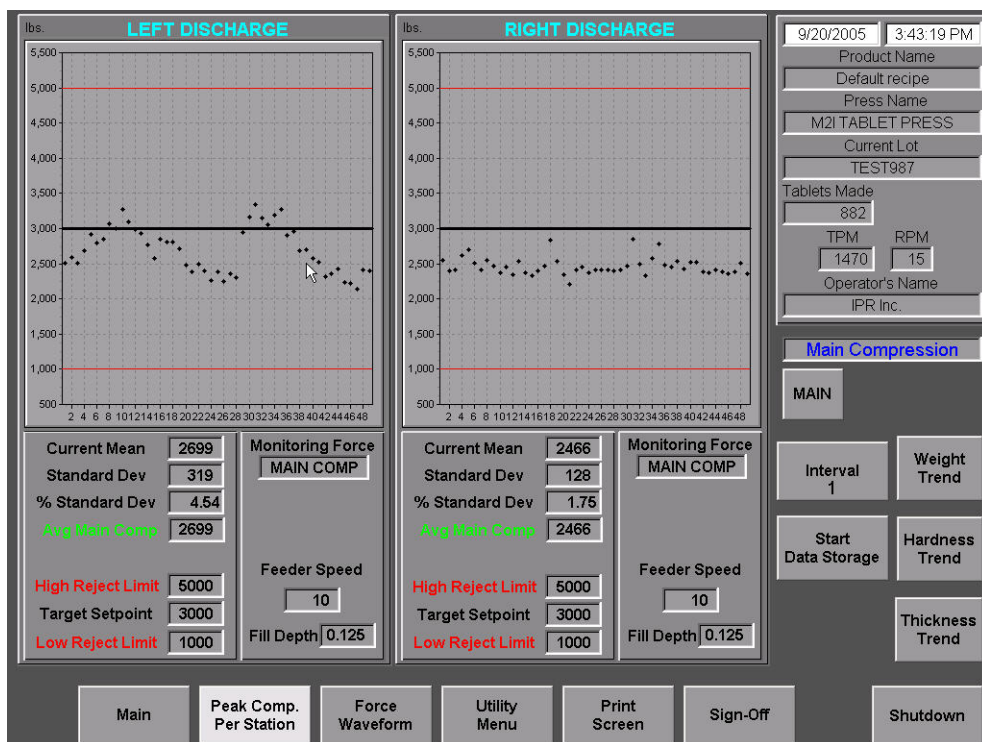
IPR has been in business since 1993. By matching customer objectives to IPR initiatives, the company has developed industry recognized products for tablet manufacturers.

Today, IPR manufactures its products in a new 20,000 square foot facility located in the western suburbs of Chicago. Sales offices are located in Bartlett, IL and Caguas, PR.

INDUSTRIAL PHARMACEUTICAL RESOURCES, INC.

1241 Hardt Circle  
 Bartlett, IL 60103

IPR's PAR2 Force Monitor and Data Acquisition System is designed to provide tablet compression force monitoring and data acquisition. Utilizing National Instrument Digital Signal Processing technology and Intellution iFix HMI Software, IPR meets rigid industry standards for compliance, ease of use, reliability, and performance.



## System Features:

**Average Compression Force Trend Analysis Screen** to graphically display average compression force, target force set point, weight adjust limits, tablet reject limits, turret rpm, tablets produced, tablets scrapped, product, and lot number.

**Individual Tool Pressure Screen** to graphically display individual punch peak forces, target force set point, weight adjust limits, tablet reject limits, turret rpm, tablets produced, tablets scrapped, product, and lot number.

**Product Recipe Screen** with tablet weight specifications and revision history

**Press Recipe Screen** with calibration, missing punches, and revision history

**Hardness Tester Interface** to record tablet hardness (Hardness Tester Not Included)

**Weight Scale Interface** to record tablet weights (Weight Scale Not Included)

**Data Acquisition Button** to store compression force data in a CSV file for

*Matching Our Objectives To Yours...*

